

# PRECONTRAI<sup>®</sup> 333

WEIGHT: 300 g/sqm

POROSITY: ± 23 %

JUMBO ROLLS\*: ± 300 lm



WINDBREAK



SPORT ENCLOSURE



VENTILATION DOORS

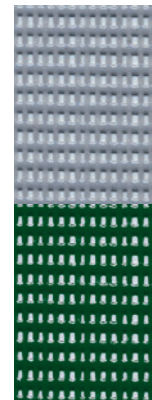
GUARANTEES AND LABELS



## ADVANTAGES

- ▶ FERRARI<sup>®</sup> PRÉCONTRAI<sup>®</sup> TECHNOLOGY
  - EXTRA THICK COATING = EXTENDED LIFESPAN
  - EXCELLENT WELDABILITY
  - STRAIGHT THREAD CONSISTENCY
- ▶ EXCELLENT EFFICIENCY IN WIND


## COLOURS & REFERENCES (COLOURS ARE INDICATIVE)



Ref.333-1072 RAL 7040

Ref.333-1054 RAL 6005

## TECHNICAL SPECIFICATIONS

	PRÉCONTRAI <sup>®</sup> 333	STANDARDS
YARN	1100 dtex	TERSUISSE 
WEIGHT	300 g/sqm	EN ISO 2286-2
WIDTH	270 cm	
TENSILE STRENGTH (WARP/WEFT)	200/100 daN/5 cm	EN ISO 1421
TEAR STRENGTH (WARP/WEFT)	30/10 daN	DIN 53.363
POROSITY	± 23%	
EFFICIENCY IN WIND	83%	XPG 39-100-3 Measurements carried out at the CMEFE in Geneva, sample 25 x 35 cm.
HANDLING TEMPERATURE RANGE	-30°C/+70°C	
QUALITY MANAGEMENT SYSTEM		ISO 9001

The technical characteristics shown are average values given as a guide and may be modified.  
\*Our packaging data are given for information only and may vary as a function of manufacturing conditions.