

DEFENDER® 7765

WIDTH: 140 cm

WEIGHT: 500 g/sqm

PANELS: PRE-CALANDERING ON REQUEST



TARPULINS FOR TRUCKS

GUARANTEES AND LABELS



ADVANTAGES

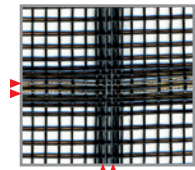
- **EXCLUSIVELY AVAILABLE CALANDERED TO 905F3, PRÉCONTRAIT® 705 OR OTHER FERRARI® TEXTILES**
(for complete tarpaulin panels + Defender®, please consult us):

 - Defender® can't be separated from the tarpaulin when calandered on the entire surface,
 - The aesthetic is preserved: the calendering process gives a regular and homogeneous aspect to the exterior of the tarpaulin,
 - This service is perfectly compatible with the welded advertising process.
- **EXCEPTIONALLY HIGH-LEVEL OF PROTECTION**

 - Fabric with built-in-high-resistant multi-strand steel cables.
 - The metal cables are woven in both warp and weft direction. Being just 5 cm apart.
- **REDUCED WEIGHT AND IMPROVED FLEXIBILITY** that preserves all handling characteristics.
- **DURABILITY:** the steel cables are anti-corrosion treated.
- **QUICK AND EASY TO REPAIR**
- **THIS FABRIC IS MANUFACTURED USING MATERIALS FROM THE TEXYLOOP® RECYCLING PROCESS.**

COLOURS & RÉFÉRENCES

(COLOURS ARE INDICATIVE)



Ref. 7765-5509

TECHNICAL SPECIFICATIONS

	DEFENDER® 7765 CALEANDERED ON 905 F3	DEFENDER® 7765 CALEANDERED ON PRÉCONTRAIT® 705	STANDARDS
FABRIC	905 F3	PRÉCONTRAIT® 705	
WEIGHT	900 g/sqm	670 g/sqm	EN ISO 2286-2
WIDTH	300 cm	270 cm	
TENSILE STRENGTH	400/380 daN/5cm	280/280 daN/5cm	EN ISO 1421
TEAR STRENGTH	45/45 daN	30/30 daN	EN ISO 1421
DEFENDER®			
WEIGHT	500 g/sqm	500 g/sqm	EN ISO 2286-2
WIDTH	140 cm ± 0,5 cm	140 cm ± 0,5 cm	
DENSITY OF METAL CABLES IN WARP	29 cables/lm	29 cables/lm	
DENSITY OF METAL CABLES PAIRS IN WEFT	32 cables/lm	32 cables/lm	
RESISTANCE TO LACERATION	NO METAL CABLE SHEARED	NO METAL CABLE SHEARED	NF F 00-201/NF F 31-118
COMPLETE PANEL (FABRIC + DEFENDER®)			
TOTAL WEIGHT	1400 g/sqm	1170 g/sqm	
HANDLING TEMPERATURE RANGE	-30°C/+70°C	-30°C/+70°C	
ASSEMBLY TECHNIQUES	HOT AIR RECOMMENDED	HOT AIR RECOMMENDED	
QUALITY MANAGEMENT SYSTEM			ISO 9001

The technical characteristics shown are average values given as a guide and may be modified.