

[WALLS, SUSPENDED CEILINGS AND PARTITIONS]

BATYLINE[®] HM

TWEED

WIDTH: 180 cm	WEIGHT: 560 g/sqm
	LENGTHS*: ± 50 lm



SUSPENDED CEILINGS



SHOP FIT OUTS

GUARANTEES AND LABELS

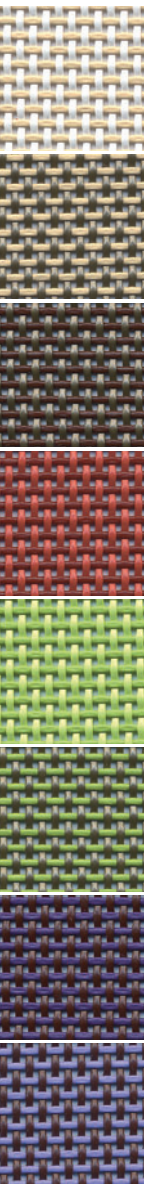


ADVANTAGES

- > HIGH FLEXIBILITY
- > EXCEPTIONAL TEAR STRENGTH
- > DIMENSIONAL STABILITY
- > FIT FOR HUMID ENVIRONMENTS
- > PERFECTLY ADAPTED TO RECOVER ACOUSTIC INSTALLATIONS
- > CONFORMS TO EUROPEAN STANDARD EN 14716 (REF CE)
- > ACCESSORY: FERRARI[®] SILCORD (P. 80)
- > MAINTENANCE: FERRARI[®] CLEAN (P. 81)

COLOURS & REFERENCES

(COLOURS ARE INDICATIVE)



Ref. 7420-6139

Ref. 7420-6020

Ref. 7420-6030

Ref. 7420-6050

Ref. 7420-6060

Ref. 7420-6040

Ref. 7420-6070

Ref. 7420-6080

TECHNICAL SPECIFICATIONS

	BATYLINE [®] HM TWEED	STANDARDS
WEIGHT	560 g/sqm	EN ISO 2286-2
WIDTH	180 cm	
TENSILE STRENGTH (WARP/WEFT)	230/200 daN/5 cm	EN ISO 1421
TEAR STRENGTH (WARP/WEFT)	35/35 daN	DIN 53.363
POROSITY	± 21%	
ELONGATION UNDER LOAD 20 DAN (WARP/WEFT)	< 4%/<2%	EN ISO 1421
ACOUSTIC ABSORPTION (α _w) ROCKWOOL 45 MM	0,8	EN 20354 / ISO 354 REVERBERATION ROOM
FLAME RETARDANCY	M1/NFP 92-507 • B1/DIN 4102-1 • M1/UNE 23.727 • VKF 5.2/SN 198 898 • BS 5867 • LP7 • CSFM T19	
EUROCLASS	B-s1,d0/EN 13501-1	
RESISTANCE TO MICRO-ORGANISMS	DEGREE 0, EXCELLENT	EN ISO 846 METHOD A AND B
HANDLING TEMPERATURE RANGE	-30°C/+70°C	PERMANENT EXPOSURE
QUALITY MANAGEMENT SYSTEM		ISO 9001
ENVIRONMENT MANAGEMENT SYSTEM		ISO 14001

The technical characteristics shown are average values given as a guide and may be modified.
*Our packaging data are given for information only and may vary as a function of manufacturing conditions.