

[WALLS, SUSPENDED CEILINGS AND PARTITIONS]

BATYLINE[®] HM

CLASSIC

| | |
|----------------------|--------------------------|
| WIDTH: 180 cm | WEIGHT: 560 g/sqm |
| | LENGTHS*: ± 50 lm |



SUSPENDED CEILINGS



WALL AND CEILING FITTINGS

GUARANTEES AND LABELS

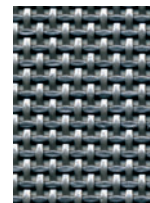


ADVANTAGES

- HIGH FLEXIBILITY
- EXCEPTIONAL TEAR STRENGTH
- DIMENSIONAL STABILITY
- FIT FOR HUMID ENVIRONMENTS
- PERFECTLY ADAPTED TO RECOVER ACOUSTIC INSTALLATIONS
- CONFORMS TO EUROPEAN STANDARD EN 14716 (REF CE)
- ACCESSORY: FERRARI[®] SILCORD (P. 80)
- MAINTENANCE: FERRARI[®] CLEAN (P. 81)

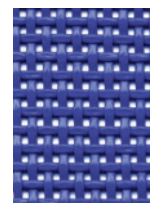
COLOURS & REFERENCES

(COLOURS ARE INDICATIVE)



Ref. 7420-5521

Metallic colours



Ref. 7420-6494



Ref. 7420-6642



Ref. 7420-6137



Ref. 7420-6304



Ref. 7420-6711



Ref. 7420-6266



Ref. 7420-6103



Ref. 7420-6842

Plain colours

TECHNICAL SPECIFICATIONS

| | BATYLINE [®] HM CLASSIC | STANDARDS |
|--|--|--|
| WEIGHT | 560 g/sqm | EN ISO 2286-2 |
| WIDTH | 180 cm | |
| TENSILE STRENGTH (WARP/WEFT) | 230/200 daN/5 cm | EN ISO 1421 |
| TEAR STRENGTH (WARP/WEFT) | 35/35 daN | DIN 53.363 |
| POROSITY | ± 21% | |
| ELONGATION UNDER LOAD 20 daN (WARP/WEFT) | < 4%/<2% | EN ISO 1421 |
| ACOUSTIC ABSORPTION (αw) ROCKWOOL 45 MM | 0,8 | EN 20354 / ISO 354 REVERBERATION ROOM |
| FLAME RETARDANCY | M1/NFP 92-507 • B1/DIN 4102-1 • M1/UNE 23.727 • VKF 5.2/SN 198 898 • BS 5867 • LP7 • CSFM T19 | |
| EUROCLASS | B-s1,d0/EN 13501-1 | |
| RESISTANCE TO MICRO-ORGANISMS | DEGREE 0, EXCELLENT | EN ISO 846 METHOD A AND B |
| HANDLING TEMPERATURE RANGE | -30°C/+70°C | PERMANENT EXPOSURE |
| QUALITY MANAGEMENT SYSTEM | | ISO 9001 |
| ENVIRONMENT MANAGEMENT SYSTEM | ISO 14001 | |

The technical characteristics shown are average values given as a guide and may be modified.
*Our packaging data are given for information only and may vary as a function of manufacturing conditions.