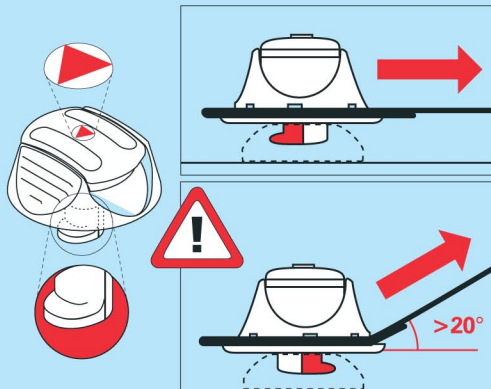
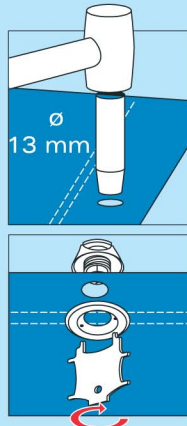


Installing PERFIX® Buttons

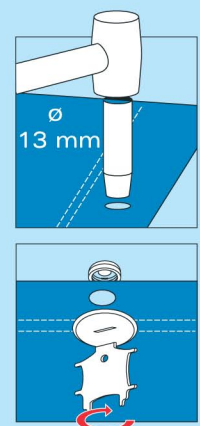
The buttons are fitted through a 13mm DIA hole in the fabric and fitted using the PERFIX® Key.

Note the orientation of the hook indicator on the button. When the fabric is taken off at $>20^\circ$ the hook must be in the direction of the tensile pull as shown.



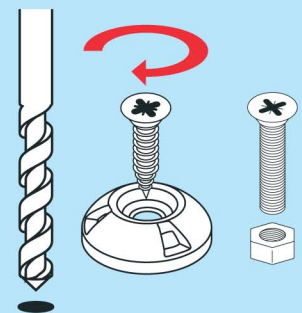
Installing PERFIX® Cloth to Cloth Receivers

Punch a 13mm Dia hole in the fabric and fit the receiver component using the PERFIX® Key.



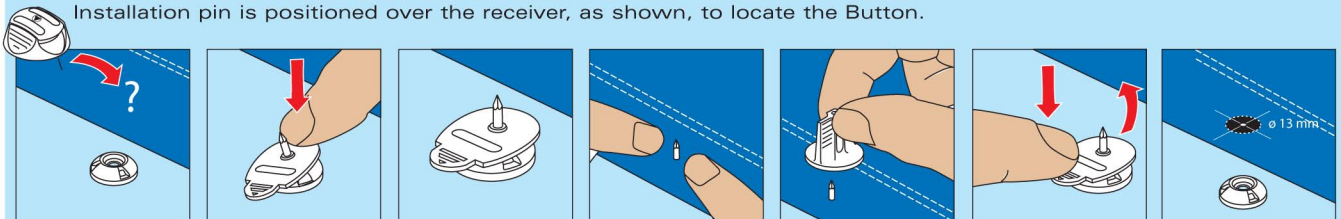
Installing PERFIX® Screw Receivers

Drill a 3 to 3.4mm Dia hole in the deck/surface and screw the receiver to the surface. M4 Flathead countersunk bolts can also be used. Seek advice when drilling into special materials.



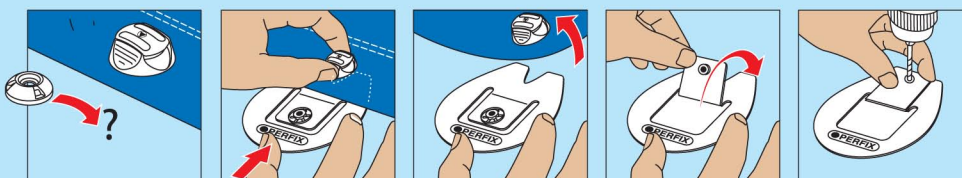
Installing PERFIX® Buttons to the Fabric when the receivers are in place

This would be typical when a cover is being replaced using existing fixing points, or when existing fixing systems are being replaced with PERFIX®. In this case the PERFIX® Installation pin is positioned over the receiver, as shown, to locate the Button.



Installing PERFIX® Receivers when the Buttons are in place

This would be typical when an existing cover is being refitted or an existing fitting is being replaced with PERFIX®. In this case the fixing point is located using the PERFIX® drilling stencil as shown.



Installing PERFIX® in thicker fabrics:

PERFIX® can be fitted to fabrics up to 4mm in thickness by adapting the standard fittings by sanding down the base of the button component as shown.

